



THE ENVIRONMENT



Always dispose of unwanted tools, accessories and packaging materials in an environmentally friendly manner.



In observance of European Directive 2012/19/EU on Waste Electrical and Electronic Equipment (WEEE) and its implementation in accordance with national law, electrical goods that have reached the end of their life must be collected separately and returned to an environmentally compatible recycling facility.

Do not dispose of electrical goods with domestic waste materials as inappropriate disposal may cause potential hazards to the environment and human health.

For further information, please contact your local authority or the retailer from whom you purchased the product.



This product does not contain any restricted substances in concentrations and applications which are banned by the European RoHS2 Directive.

DECLARATION OF CONFORMITY

We hereby certify that **KOBE MICRO AIR DIE GRINDER**

(**ORDER CODE: KBE-270-2543K**)

complies with all the relevant provisions of the

Machinery Directive: 2006/42/EC

Standards Applied:

EN ISO 12100:2010, EN ISO 11148-9:2011, ISO 28927-12, EN ISO 15744:2008

Signed:

Date: 1st May 2016

Name: Keith Read

Position: HSQE Manager.

KOBE TOOLS

THE KENNEDY GROUP LTD, WIGSTON, ENGLAND, LE18 2FS.



QUALITY GUARANTEE & WARRANTY

KOBE INDUSTRIAL POWER TOOLS carry one years manufacturers warranty.

KOBE INDUSTRIAL POWER TOOLS are designed & manufactured to the highest standards & specifications

Assuring the quality and performance required by all sectors of industry.

KOBE INDUSTRIAL POWER TOOLS are fully guaranteed against faulty materials & workmanship

Should they be found to be defective, they will either be repaired or replaced free of charge (fair wear and tear and/or misuse excepted).

Please retain supplier invoice as proof of purchase.

KOBE TOOLS OFFICIAL AGENT: THE KENNEDY GROUP, WIGSTON, LEICESTER, ENGLAND. LE18 2FS
© The Kennedy Group Ltd. 05/16

KOBE™

PROFESSIONAL AIR TOOLS

MICRO AIR DIE GRINDER

MODEL
MG-056-3

ORDER CODE:
KBE-270-2543K

- For Precision Grinding etc.
- With Hose and Silencer
- Lightweight - 0.21kg
- 56,000rpm
- 3mm Collet



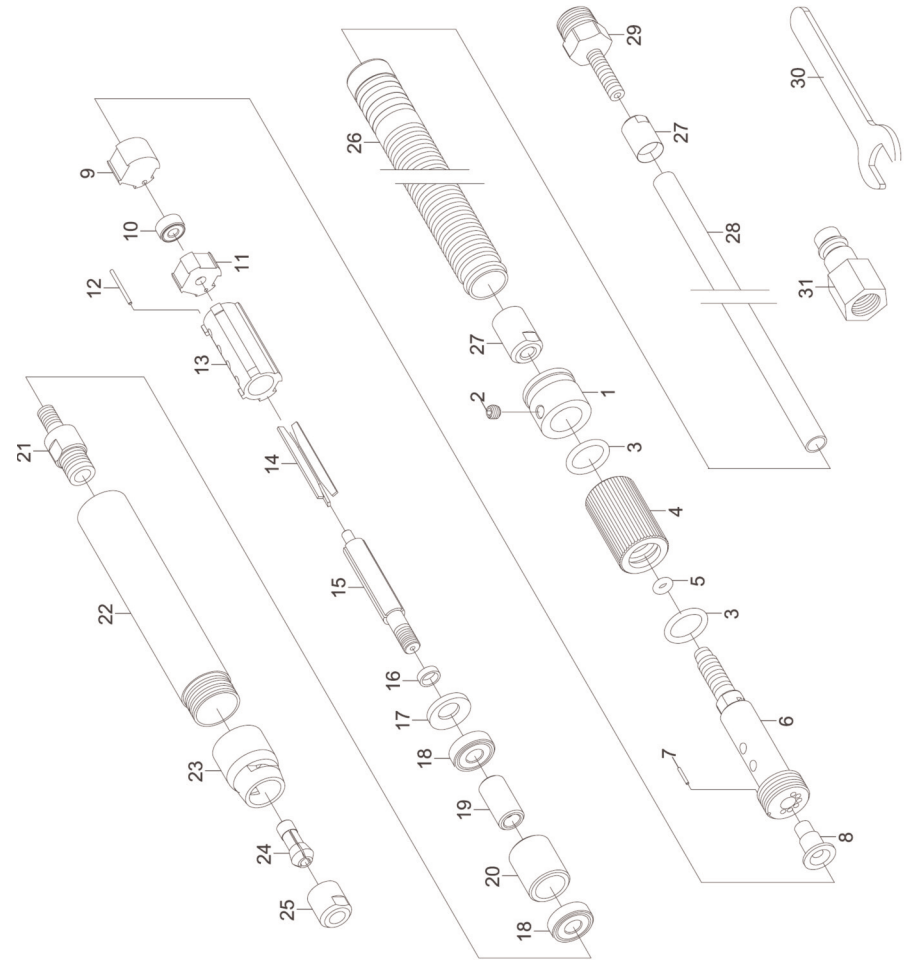
WARNING: THE SAFETY INFORMATION GIVEN INSIDE MUST BE READ AND UNDERSTOOD BY ANY PERSON USING, INSTALLING, REPAIRING OR MAINTAINING THIS MACHINE.



ALWAYS WEAR APPROPRIATE PERSONAL PROTECTIVE EQUIPMENT.

OPERATOR'S MANUAL

Please retain this information for future reference.



No.	Order Code KBE-298	Description	No.	Order Code KBE-298	Description
1	0037F	Rear End Holder	19	0046F	Inner Bearing Retainer Bushing
2	0001F	Screw	20	0043F	Outer Bearing Retainer Bushing
3	0004F	O-Ring	21	0049F	Collet Foundation
4	0055F	Sliding Knob	22	0052F	Sleeve
5	0007F	O-Ring	23	0040F	Front Cover
6	0067F	Hose Plug	24	KBE-280-0091A	Collet 3mm
7	0010F	Pin	25	KBE-280-0097A	Clamping Nut
8	0016F	Plug	Optional Accessories Available		
9	0034F	Intake Plate	26	KBE-298-0050A	Muffer Tube
10	0076F	Ball Bearing	27	KBE-298-0050B	Hose Ring
11	0028F	Bearing Plate	28	KBE-298-0050C	Air Hose
12	0013F	Pin	29	KBE-298-0050D	Inlet Connector
13	0073F	Cylinder	30	KBE-298-0050E	Spanner
14	0019F	Rotor Blade (3)	31	KBE-298-0050F	Air Nipple
15	0070F	Rotor		KBE-298-0050G	1/8" Collet
16	0025F	Spacer		KBE-298-0050H	3/32" Collet
17	0022F	Lateral Disc			
18	0079F	Ball Bearing			

SAFETY INSTRUCTIONS

You have purchased a quality product that is designed for high performance and long service life. If correct use, safety and maintenance procedures are observed this machine will last for many years.

KOBE PROFESSIONAL have been specifically designed to help you work **SAFELY** and **EFFICIENTLY**. Your care and good judgement are the best protection against injury, but always ensure that the appropriate safety equipment is worn. All possible hazards cannot be covered here, but the most important ones have been highlighted. Always adhere to the processes and safety warnings, which are stated in the instruction manual.

GENERAL OPERATING HAZARDS

- Keep your work area clean and well lit.
- Do not operate power tools in explosive atmospheres, such as in the presence of combustible liquid, gases or dust. Power tools create sparks which may ignite the dust or fumes.
- Disconnect tool before performing service or when not in use.
- High sound levels can cause permanent hearing loss. Use hearing protection during operation.
- Maintain a balanced body position and secure footing.
- Slips/Trips/Falls are a major cause of serious injury or death. Be aware of excess hose left on the working floor.
- Repetitive work motions, awkward positions and exposure to vibration can be harmful to hands and arms. If numbness, tingling, pain or whitening of the skin occurs, stop using the tool and consult a physician.
- Always wear impact-resistant eye and face protection when operating, repairing or performing maintenance of the tool or while changing tool accessories.

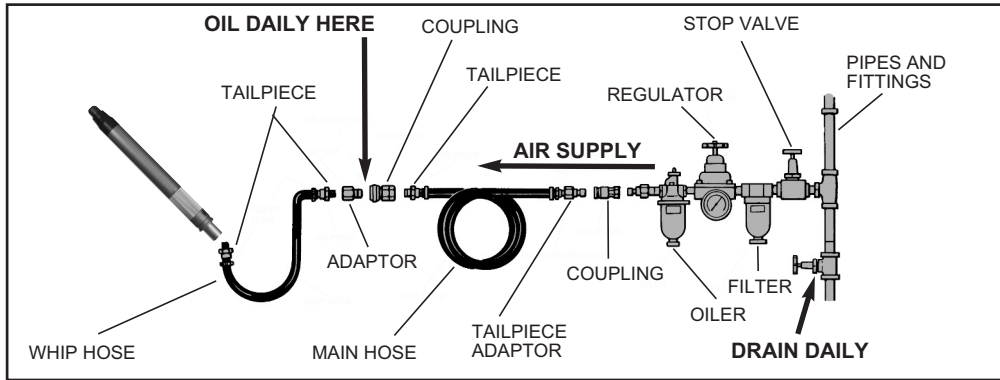
SPECIFIC SAFETY INSTRUCTIONS

- Supply tool with 90PSI of clean, dry air. Higher pressure drastically reduces tool life. Connect tool to air line using pipe, hose, and fitting sizes. Do not install a quick coupler directly into the grinder throttle handle.
- Use only mounted wheels or tire buffing accessories with adequate speed rating and the correct shaft diameter. Grinding accessory's rated speed must be equal to or greater than the speed of the die grinder.

LUBRICATION

- Use an air line lubricator with air tool oil, adjusted to two drops per minute. If an air line lubricator cannot be used, add air motor oil to the inlet once a day.

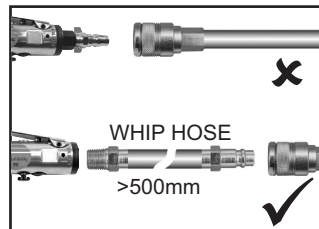
KOBE PROFESSIONAL AIR TOOLS AIR SUPPLY AND CONNECTION



- 1) Before connecting, ensure the dust cap is removed (See Fig.A).
- 2) Connect tools to the air line using pipe, hose and fitting sizes listed in the specifications.
- 3) Supply tools with 6.2bar (90psi) of clean, dry air. A higher pressure and unclean air will shorten the tool life because of faster wear and may create a hazardous condition.



REQUIREMENTS FOR QUICK ACTING COUPLINGS CONNECTED TO AIR TOOLS:
A whip hose of minimum length 500mm between the tool and the coupling is required in order to comply with Health and Safety Executive Guide **HS(G) 39, BS4575:2, ISO 4414 and ISO 6150**. This will also reduce the strain applied by the weight of the air hose on the end of the air tool.



KOBE PROFESSIONAL AIR TOOLS SPECIFICATIONS

ORDER CODEKBE-270-2543K
 MODEL NUMBER.....MG-056-3
 FREE SPEED.....56,000rpm
 COLLET SIZE.....3mm
 AIR INLET THREAD.....1/4NPT
 AIR HOSE SIZE (ID).....5mm

AIR HOSE SIZE (ID)5mm
 AIR PRESSURE90PSI
 AIR CONSUMPTION.....7CFM*
 OVERALL LENGTH.....156mm
 WEIGHT0.21kg
 *Based on 15 second cycle per minute average use.

KOBE PROFESSIONAL AIR TOOLS OPERATION

WARNING! BEFORE ATTEMPTING TO USE THIS PRODUCT, MAKE SURE YOU ARE FAMILIAR WITH ALL OPERATING AND SAFETY INSTRUCTIONS.

HOW TO USE:

- Connect the die grinder to the air supply.
- To start, hold securely and twist the trigger to the on position.
- Run the grinder before attempting to grind the workpiece.
- Ease the grinding stone toward the workpiece

CHANGING GRINDING STONES:

- **ALWAYS** disconnect from the air supply before changing the grinding stones.
- Check the grinding stones are not cracked or deformed. Damaged stones must not be used.
- Use wrench provided to loosen the collet locking collar. Insert appropriate grinding stone for the workpiece and re-lock collar.
- **DO NOT** keep the die grinder free running for excessive periods of time as this will reduce the tools life.

KOBE PROFESSIONAL AIR TOOLS MAINTENANCE

- After first year disassemble and inspect tool every three months if the tool is used every day. Replace damaged or worn parts.

KOBE PROFESSIONAL AIR TOOLS SERVICE & REPAIRS

A comprehensive repair and service facility is available through your local Kobe agent.

